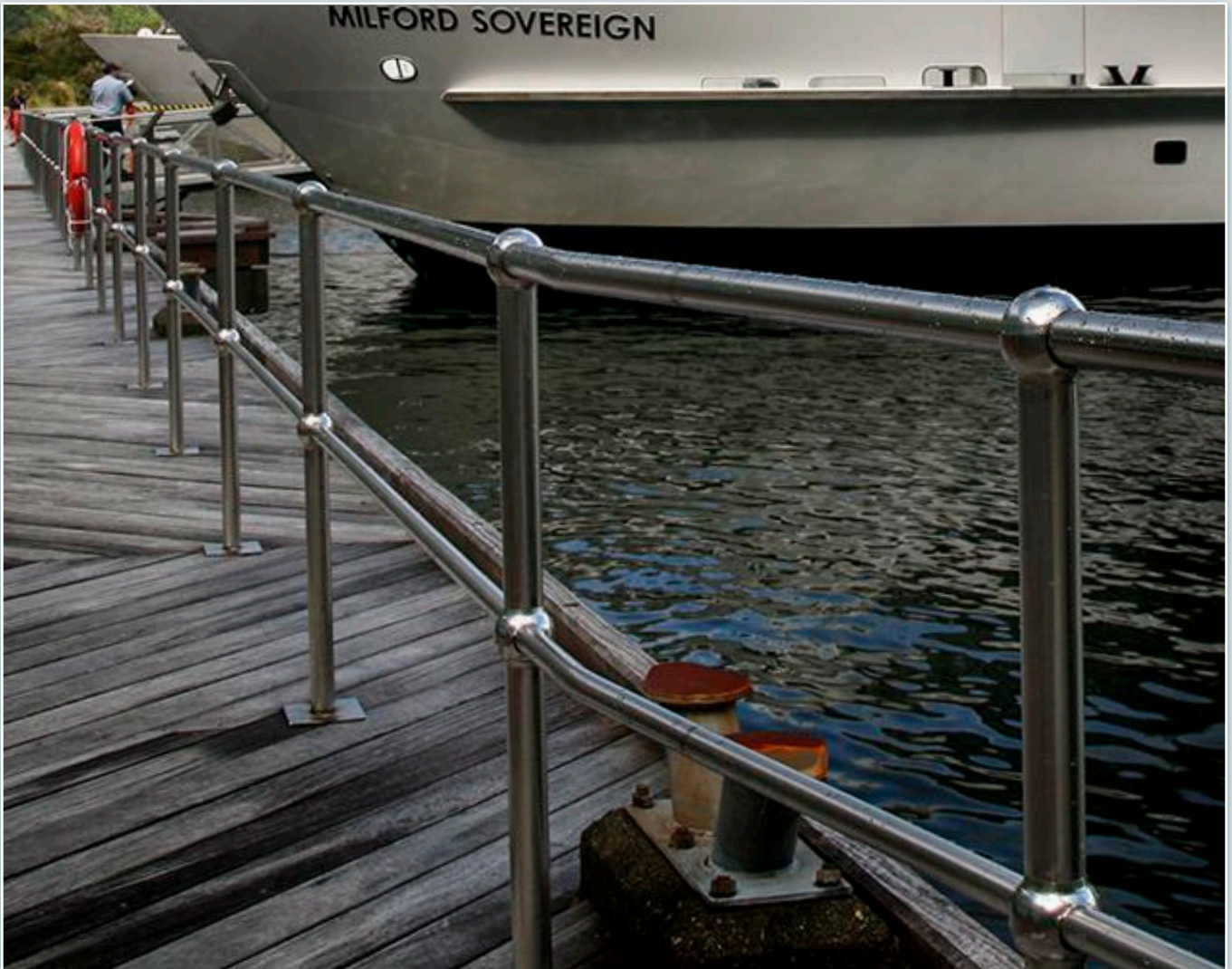


# HANDRAIL



**JIMU  
GRATING**

## CONTACT US

Address: Anxian Road, Songxia Industrial Park, Shishan Town, Foshan City, Guangdong Province, China 528234

Phone: +86-757-85216833

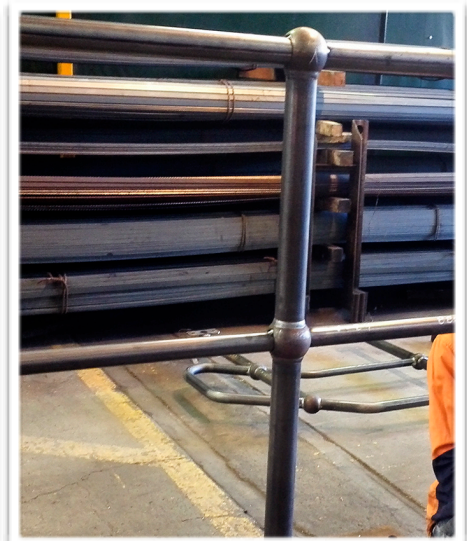
Fax: +86-757-85213840

Email: [sales@jmgrating.com](mailto:sales@jmgrating.com)

Website: [www.jmgrating.com](http://www.jmgrating.com)

JIMU mainly produce Ball Joint Handrail and pre-fabricated Handrail Panel that use with steel platform and walkway. On-site installation is saving time and labour cost. Material can be *Carbon Steel, Stainless Steel or Aluminum.*





# Ball Joint Handrail

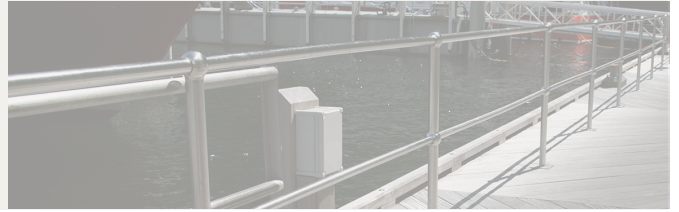
— Weld the pipe with hollow ball to form the stanchions, and use with Bends and Closures.



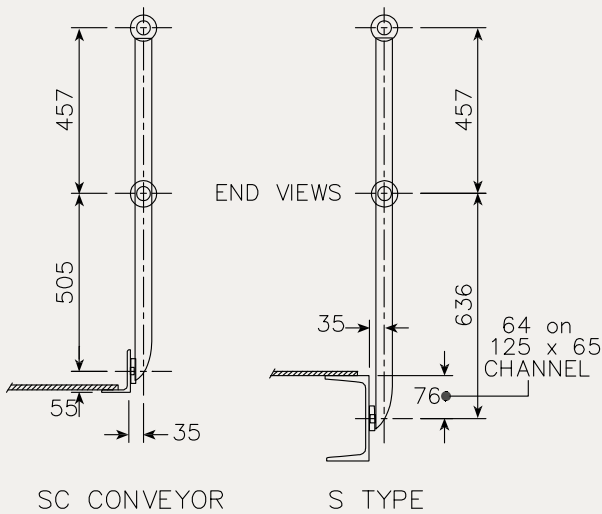
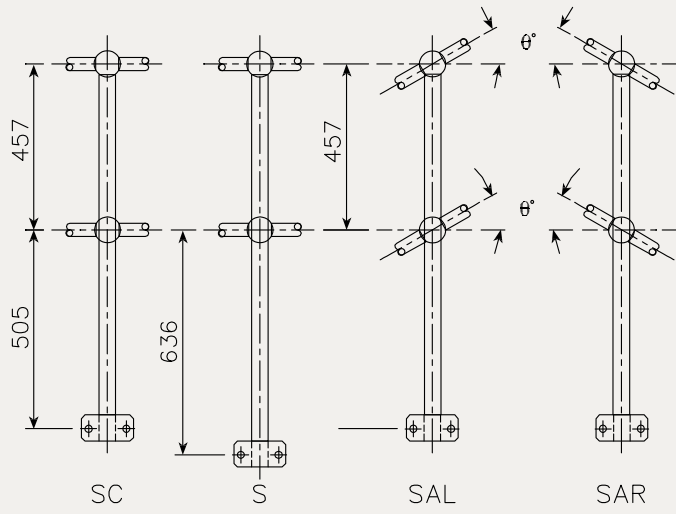
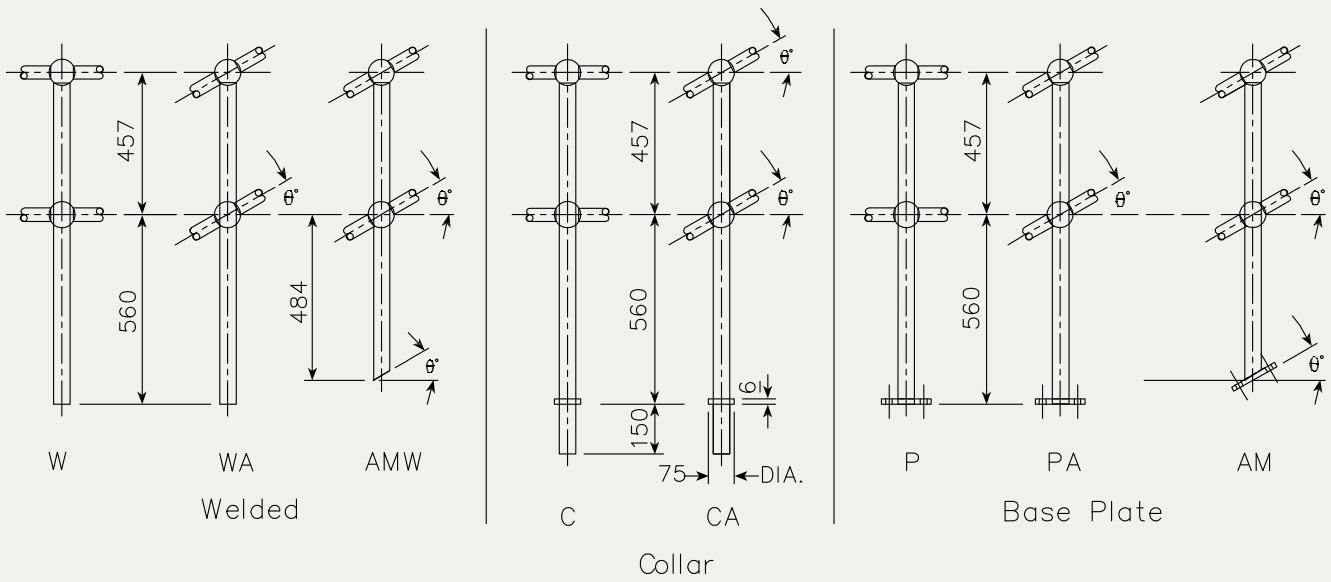
## Surface Treatment

| Material        | Surface Treatment                                 |
|-----------------|---|
| Carbon Steel    | Hot Dip Galvanizing 、 Powder Coating and Painting |
| Stainless Steel | Electrochemical Polishing                         |
| Aluminum        | Pickling, Anodized, PVDF Coating, Powder Coating  |

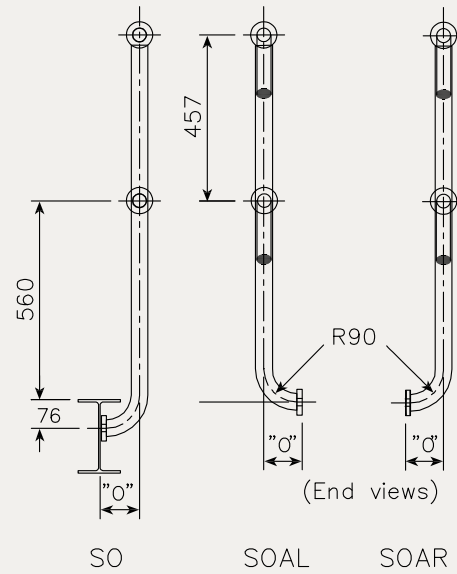
# Ball Joint Handrail



## Standard Stanchions



Side Mounted



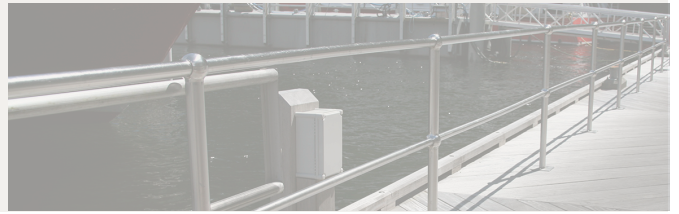
Offset "O" (mm)

| Channel   | "O" offset | Universal Beam | "O" offset |
|-----------|------------|----------------|------------|
| 125 x 65  | 110        | 200            | 110        |
| 150 x 75  | 110        | 250            | 110        |
| 180 x 75  | 110        | 310            | 120        |
| 200 x 75  | 110        | 360            | 125        |
| 230 x 75  | 110        | 410            | 125        |
| 250 x 90  | 125        | 460            | 135        |
| 300 x 90  | 125        | 530            | 140        |
| 380 x 100 | 135        |                |            |

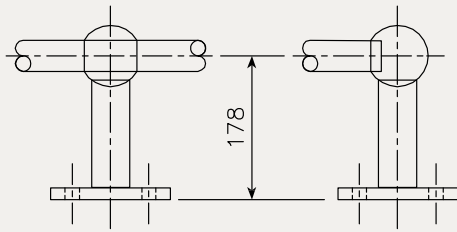
Side Mounted Offset



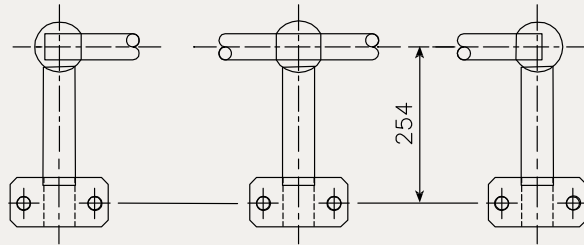
# Ball Joint Handrail



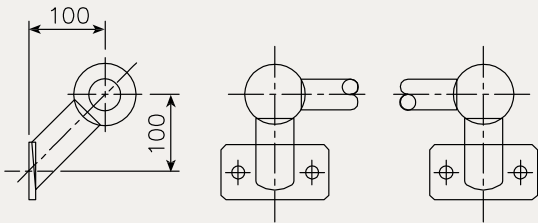
## Standard Single Ball Stanchions



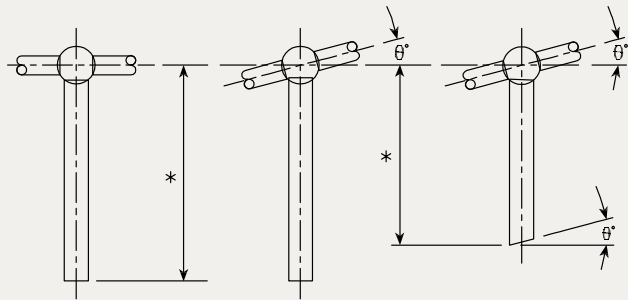
SBP



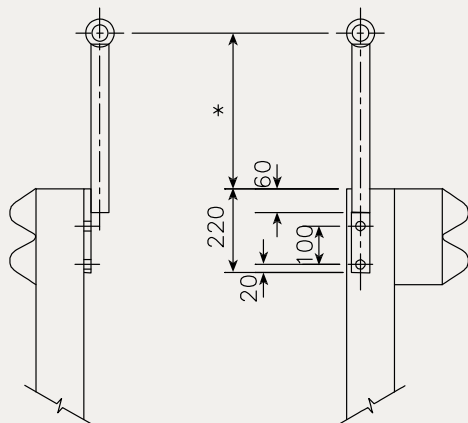
SBS



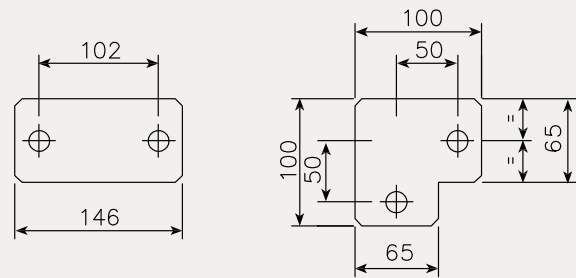
SBH



SBW

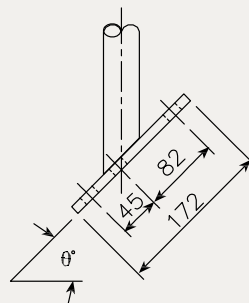


PRH

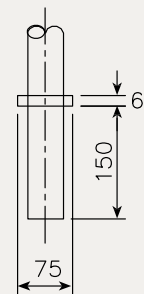


TYPICAL BASE PLATE

CORNER POST



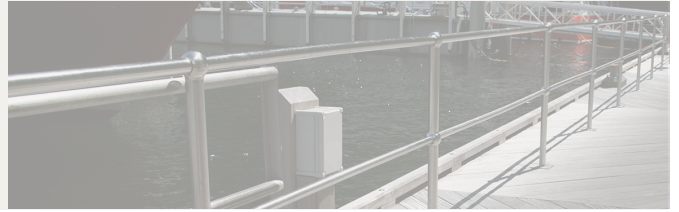
BASE OF AM



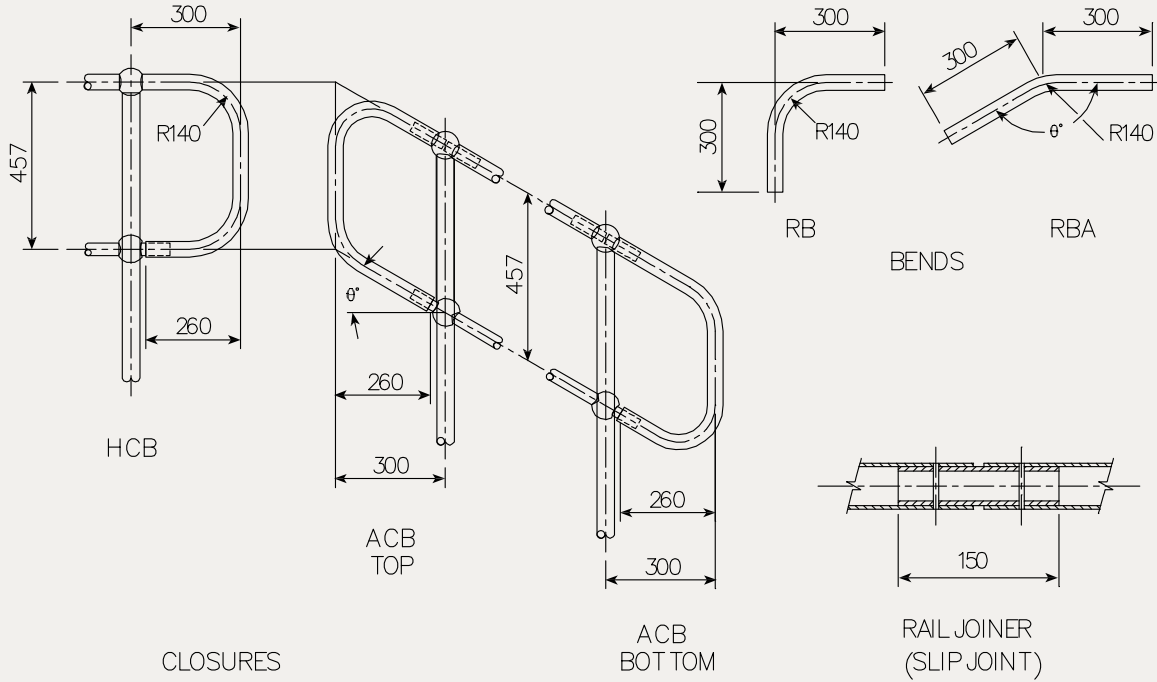
C-TYPE

## Standard Base Plates

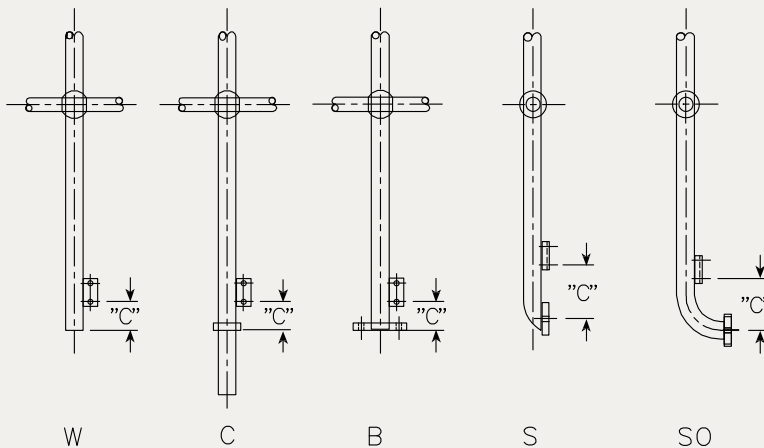
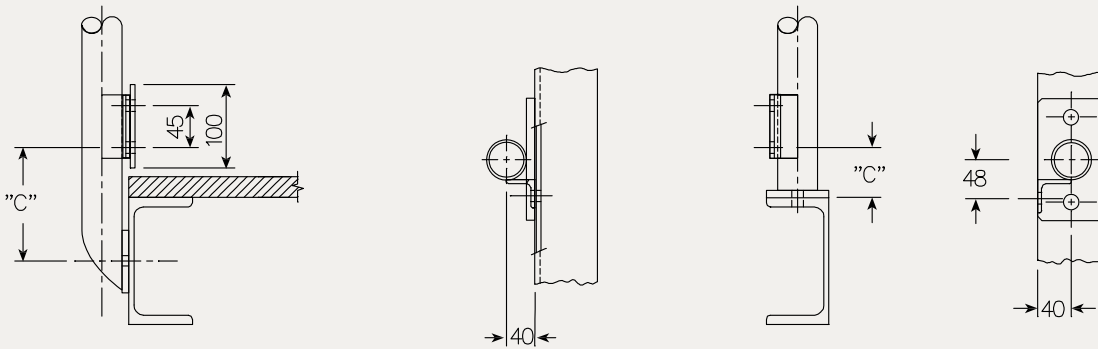
# Ball Joint Handrail



## Standard Closures, Joiners and Bends



## Kickplate Mounting Brackets

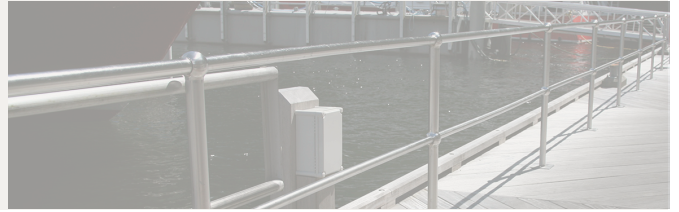


### Dimension "C" (mm)

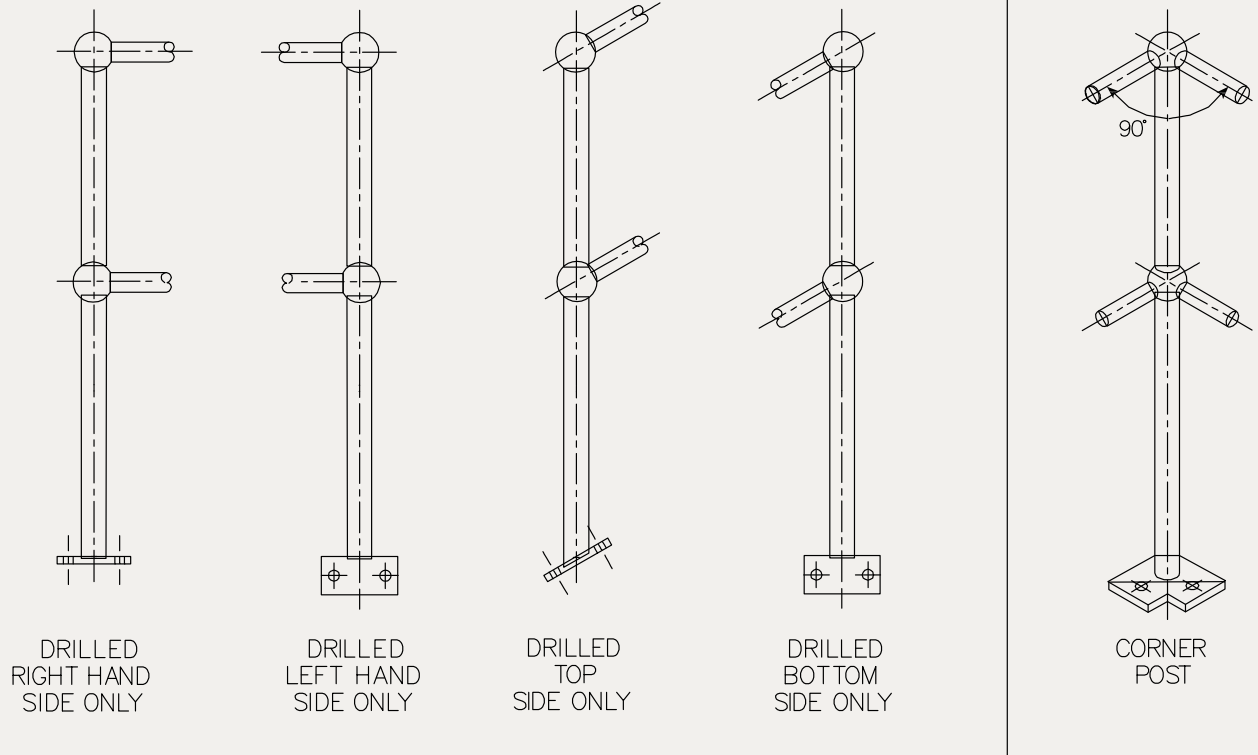
| Type | "C" = Grating or Plate Thickness Plus |
|------|---------------------------------------|
| W    | 30                                    |
| C    | 30                                    |
| BP   | 30                                    |
| SM   | 106*                                  |
| S MO | 106*                                  |

\*94 when used on 125 x 65

# Ball Joint Handrail

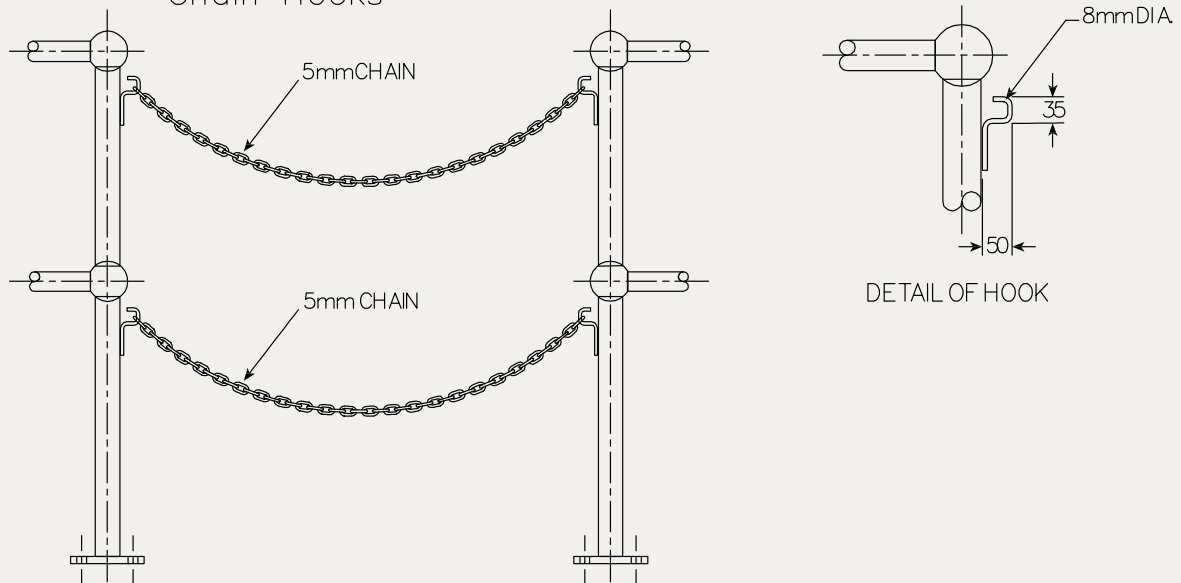


## Special Drilling for Rails



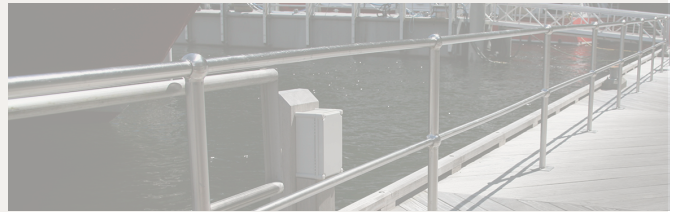
DRILLED ONE SIDE ONLY (D.O.S.O.)

## Chain Hooks

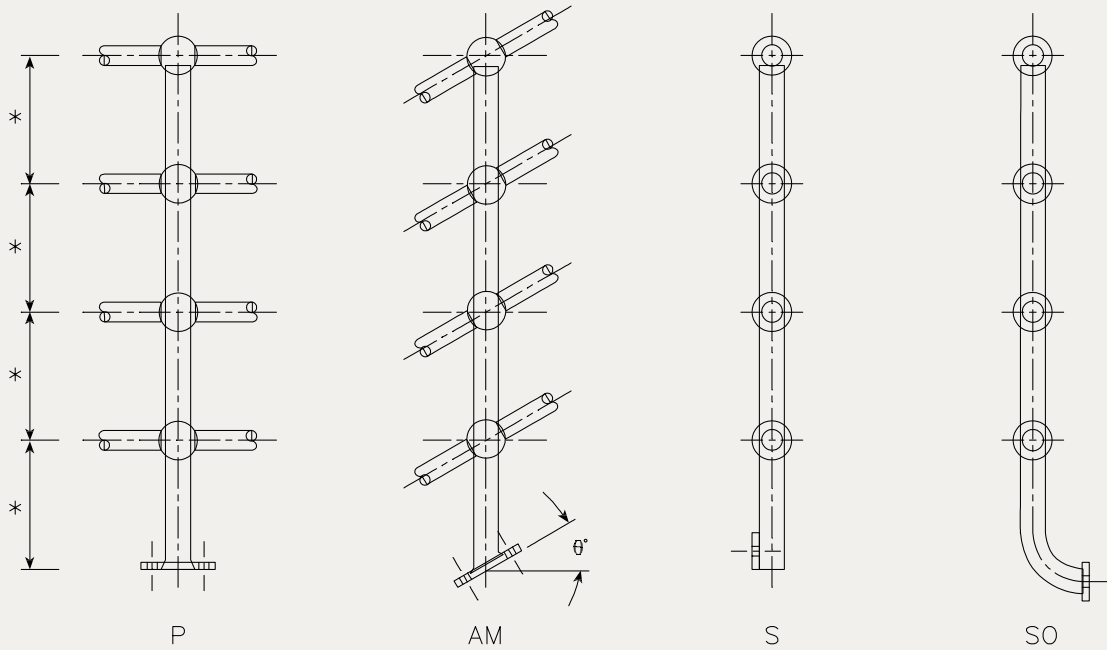


D.O.S.O. STANCHIONS WITH CHAIN HOOKS

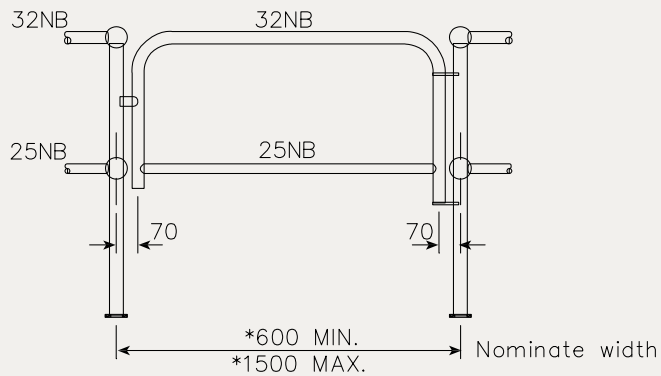
# Ball Joint Handrail



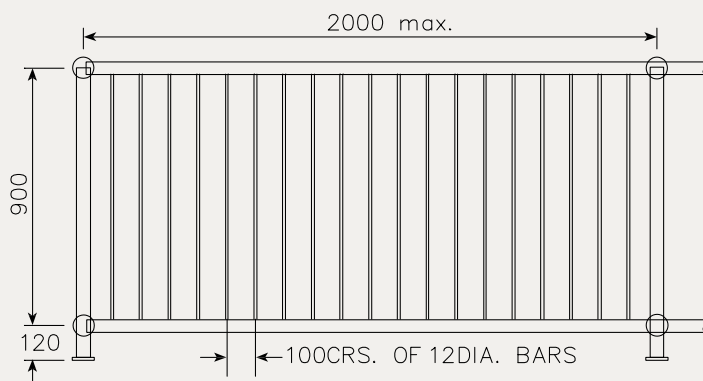
## Multi Ball Stanchions



\*Specify number of balls, pitching & height required of stanchion (150mm minimum centres)  
Multi ball stanchions are available in any of the range of Balltube stanchion configurations

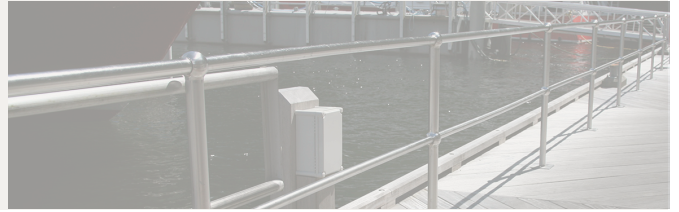


SELF CLOSING GATE

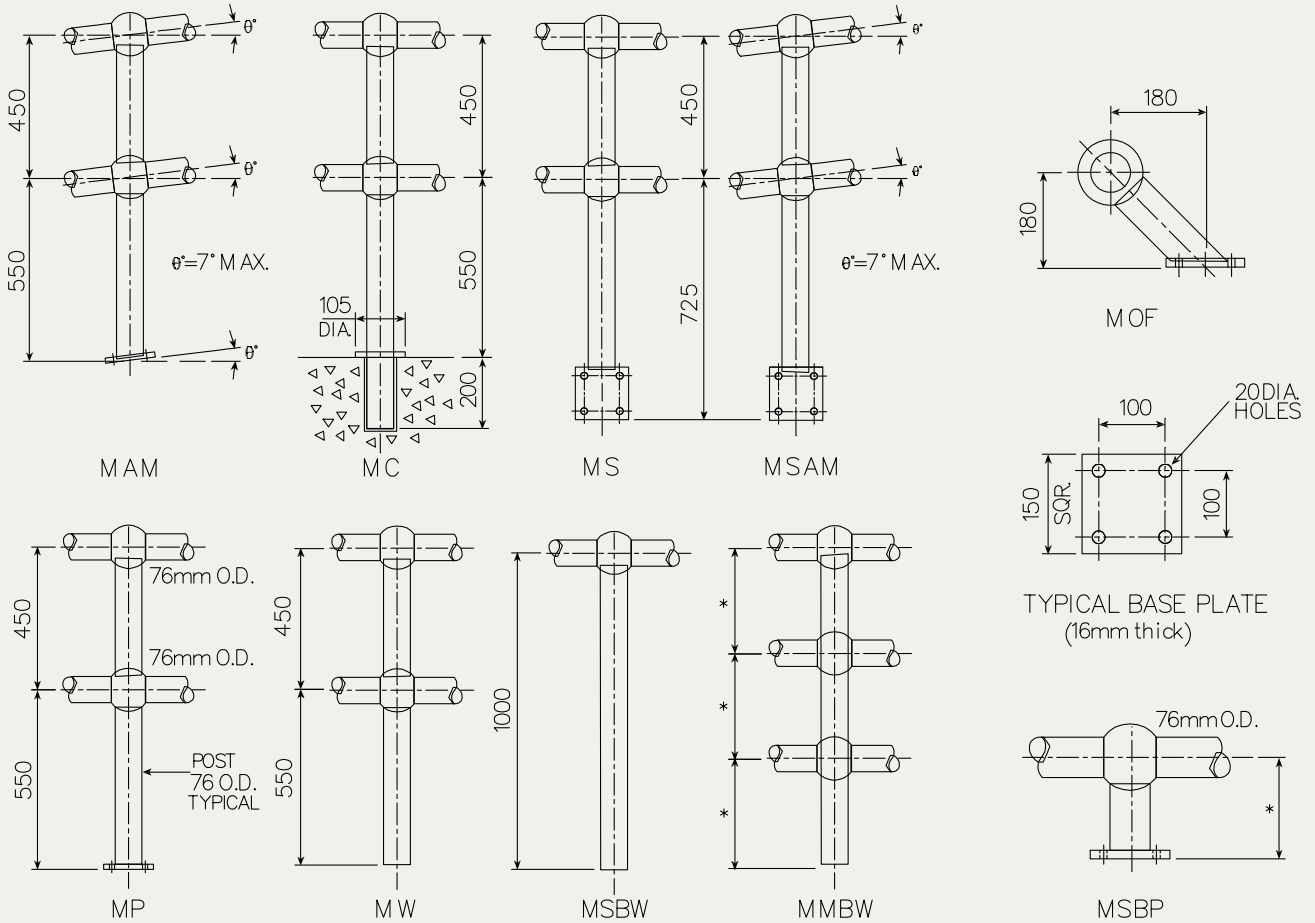


BARRIER FENCING PANEL

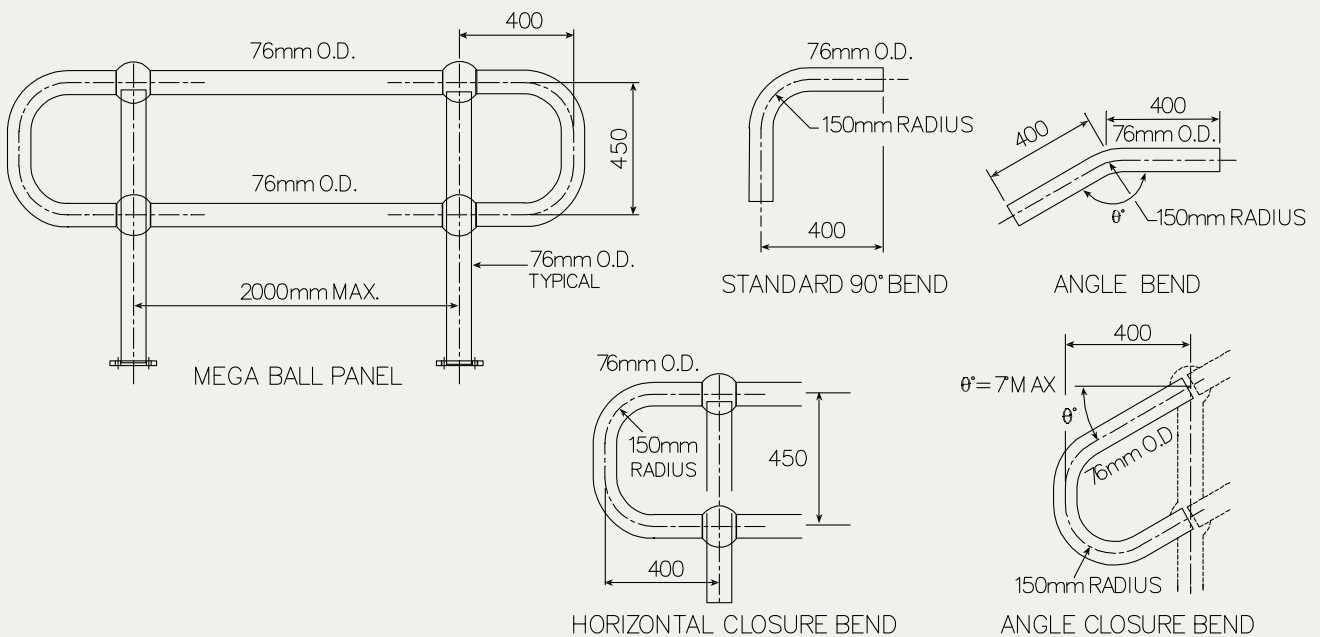
# Ball Joint Handrail



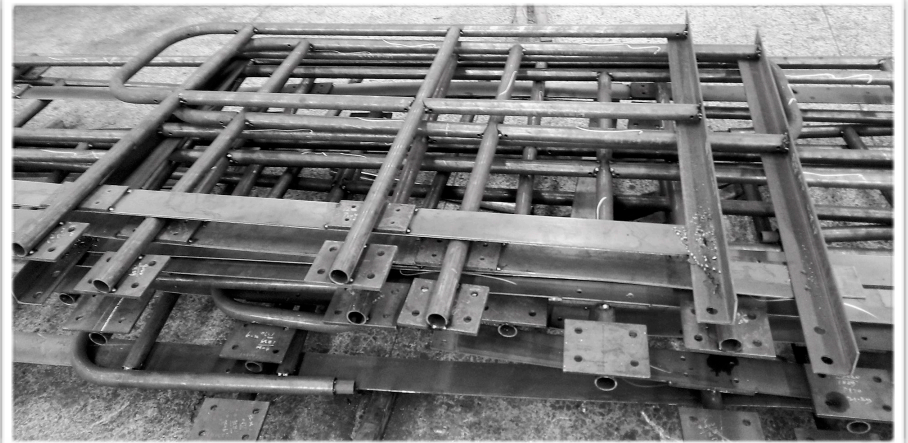
## Mega Ball Stanchions



## Mega Ball Closures and Bends







# Panel Handrail

— — To fabricate the ball joint handrail or other types sections into panels at factory. Usually Panel Handrail are installed on site.

This kind of handrail is fabricated base on the drawing which customer provided. Therefore, the model, specification and style are not fixed.